

LIVE BOTTOM BINS

The Live Bottom Bin is the answer where bridging products, floor space and hard to convey materials are a common problem. The screw assemblies act as a constantly moving floor to eliminate any products from bridging, whilst the bin walls contain the volume of product to be conveyed - eliminating the need for a separate storage system.

Live Bottom Bins can be found in a wide variety of Industries, some of the most common are:

Sugar Refineries, Cement Plants, Waste Water / Sewage Treatment, Paper and Pulp, Wine Industry, Mining Applications and the Forest Industry.



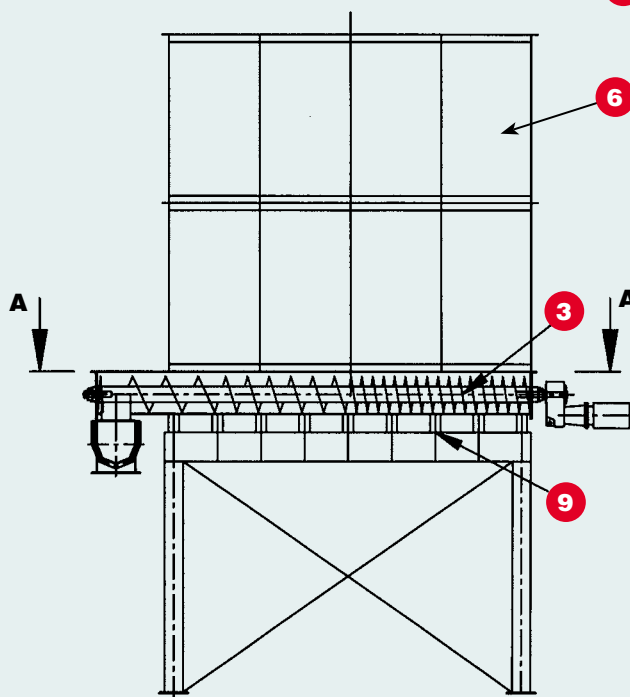
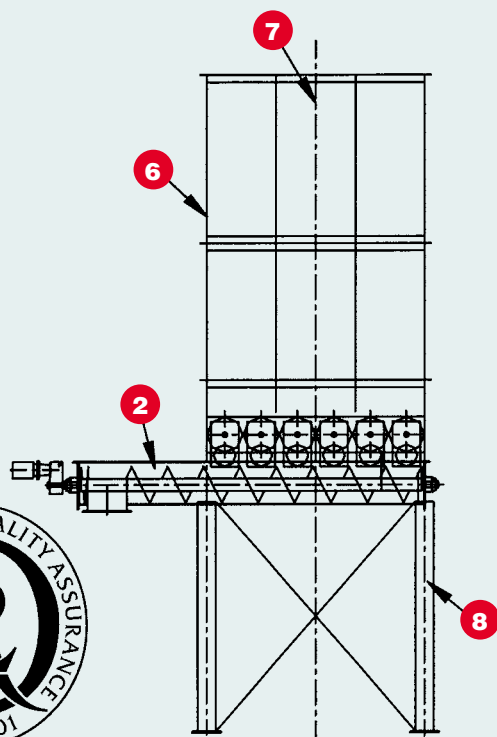
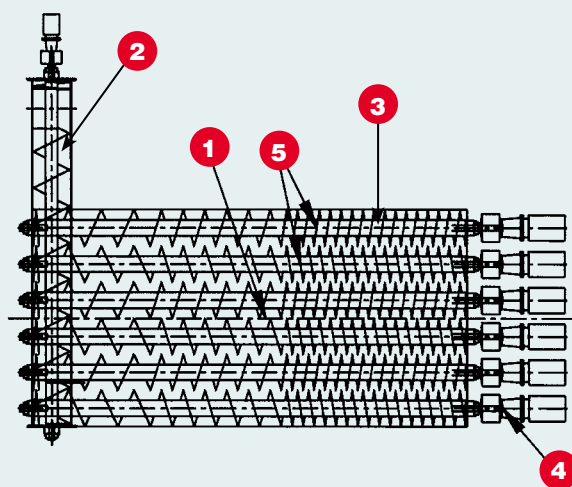
JACMOR IS QUALITY

Jacmor Live Bottom Bins, may be constructed with a large range of options, including:

'U' trough casing - or flat bottom
 Wear resistant
 Jacketed casing - Heating or Cooling
 Variable Speed Drives
 Independent drives or timing gears
 Corrosion resistant - s/s
 Polished to Food grade specifications

Ribbon / Paddle flight sections - for sticky products
 Labyrinth greased purged bearing arrangement
 Taconite seals
 Hard faced Screws
 High and low level switches
 Central lubrication points
 Variable volumetric capacities

Item	Description
1	Live Bottom
2	Collecting Conveyor
3	Variable Pitch Screws
4	Independent Multiple Drives
5	Alternating Right & Left Hand Screws
6	Modular Panelled Walls
7	Holding Hopper
8	Support Structure
9	Support Base



Victoria – Head Office:

136 Bell Street Preston Victoria 3072 Australia Telephone: 61 3 9480 5000 Facsimile: 61 3 9480 5893

N.S.W. Office:

Telephone: 61 2 9844 54956 Facsimile: 61 2 9844 5478

FreeCall 1800 334 005

Web Site: www.jacmor.com.au E-mail: info@jacmor.com.au